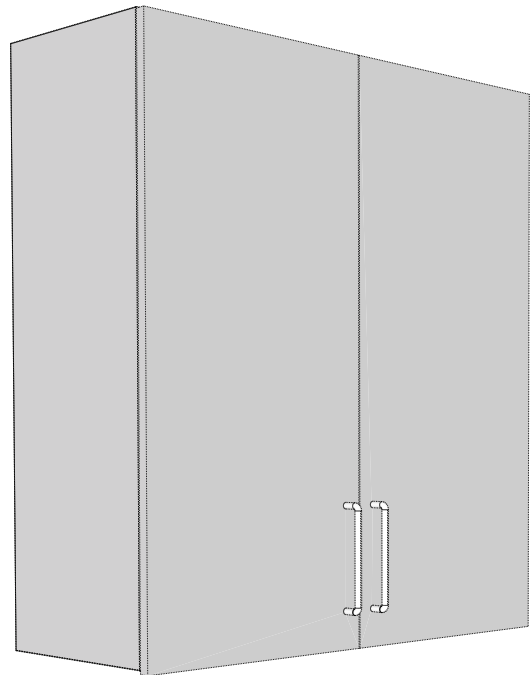




Standard Kitchen Cabinets Assembly

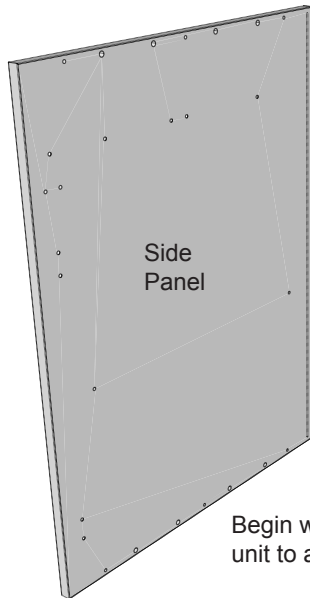
Manufacturer:  **SUJAKO**
Sujako Int. Pvt. Ltd.



contact: **510-333-2009**
www.reekocabinets.com

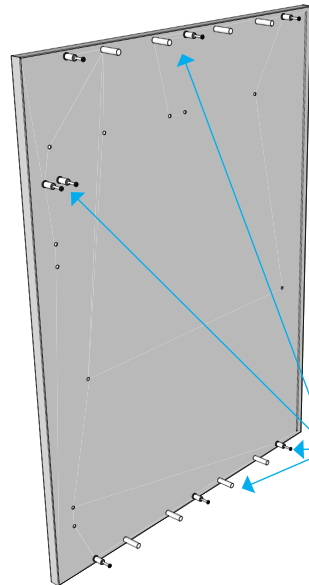
Basic Base-Cabinet Assembly

1



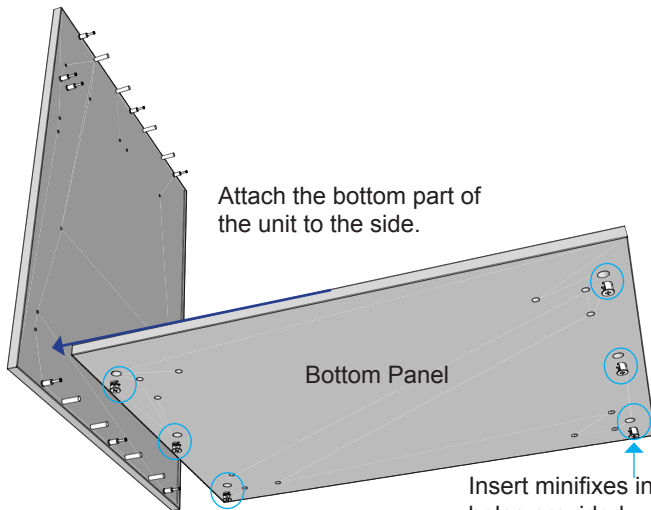
Begin with a side of a unit to assemble.

2



Insert cam screws and wooden dowels in the holes provided.

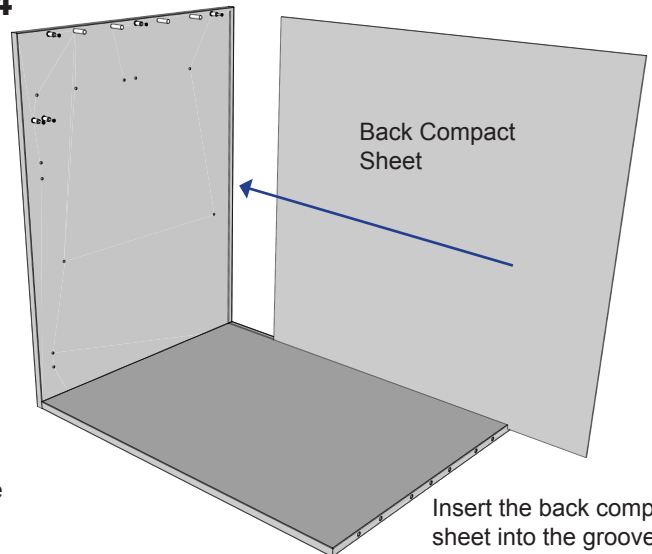
3



Attach the bottom part of the unit to the side.

Insert minifixes in the holes provided.

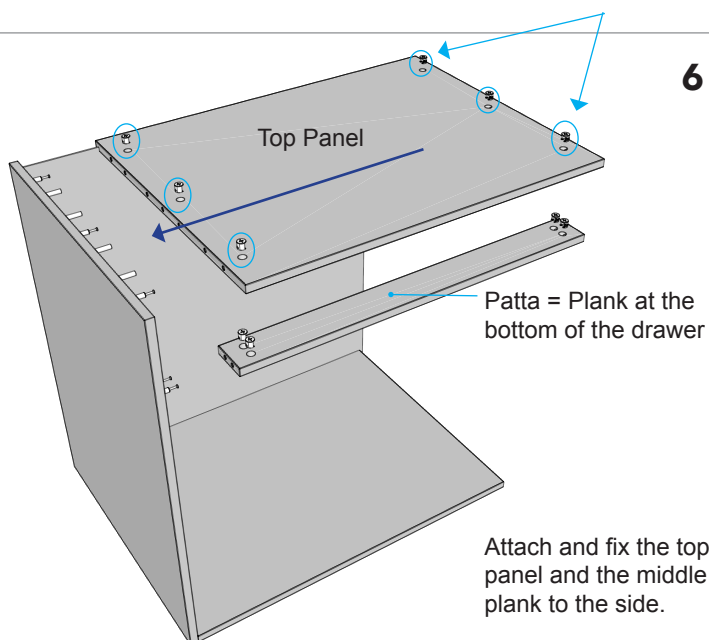
4



Back Compact Sheet

Insert the back compact sheet into the groove.

5

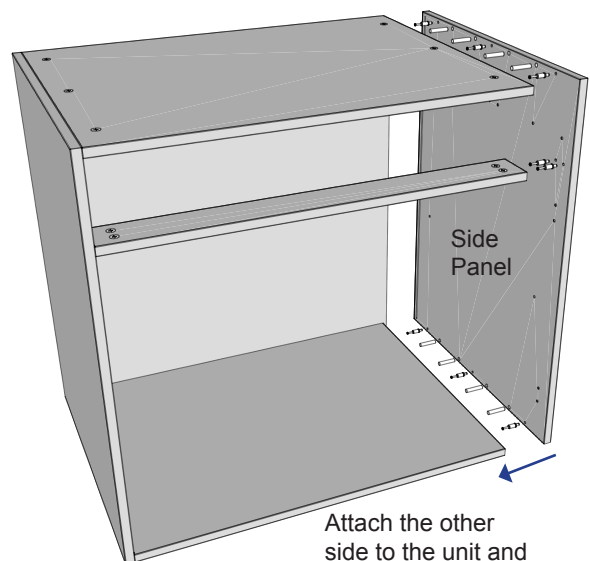


Top Panel

Patta = Plank at the bottom of the drawer

Attach and fix the top panel and the middle plank to the side.

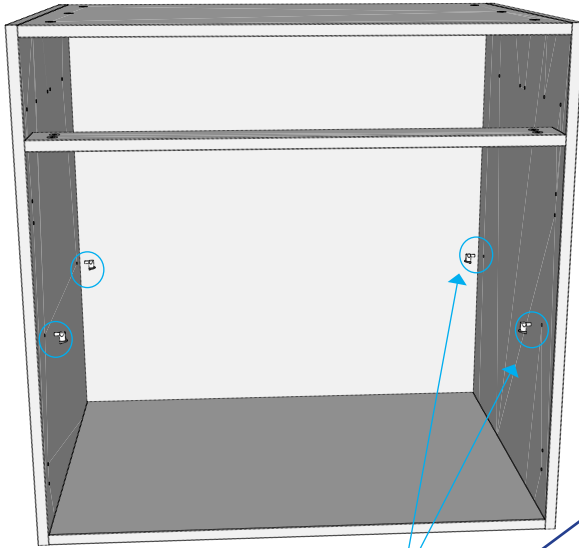
6



Side Panel

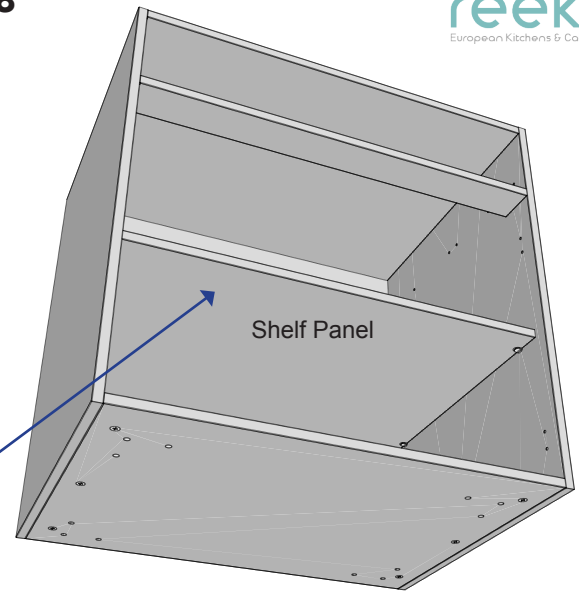
Attach the other side to the unit and lock the minifixes.

7

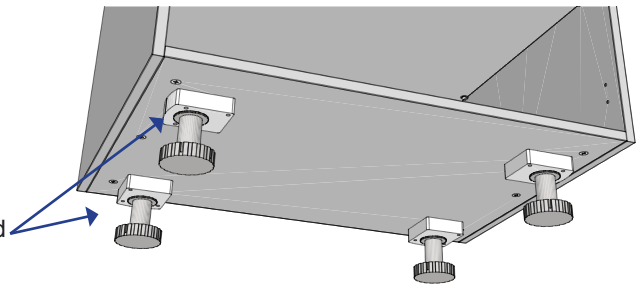


Screw the shelf pins to attach the shelf.

8



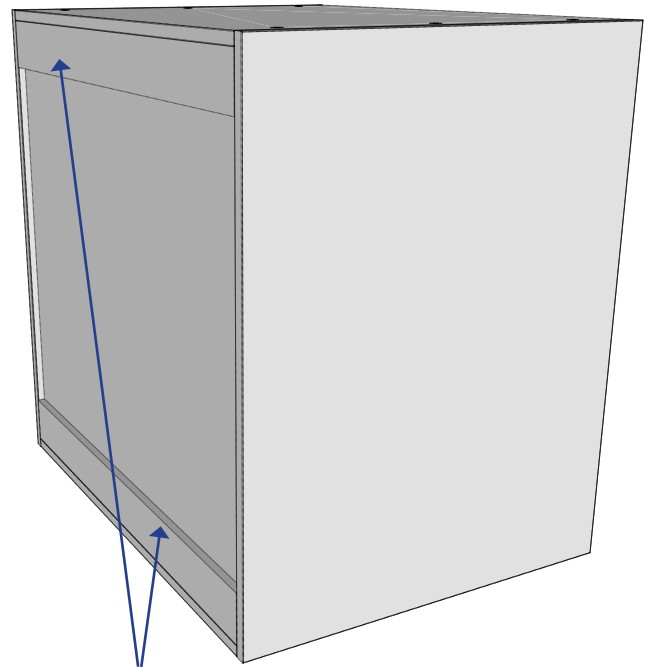
9



Attach the plastic leveler legs for the toe-kicks in the holes given and secure with the screws.



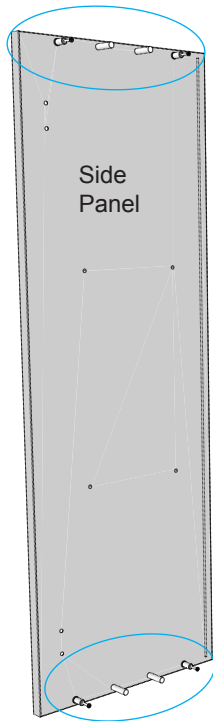
Base Unit Carcass ready to install



Nailer planks provided to secure the cabinet units with the wall.

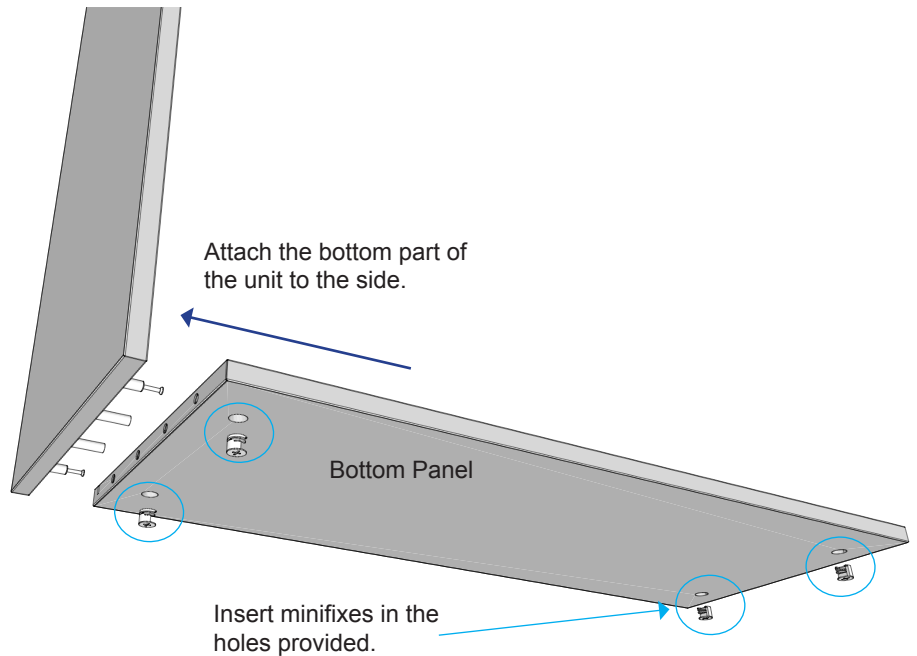
Basic Overhead Cabinet Assembly

1

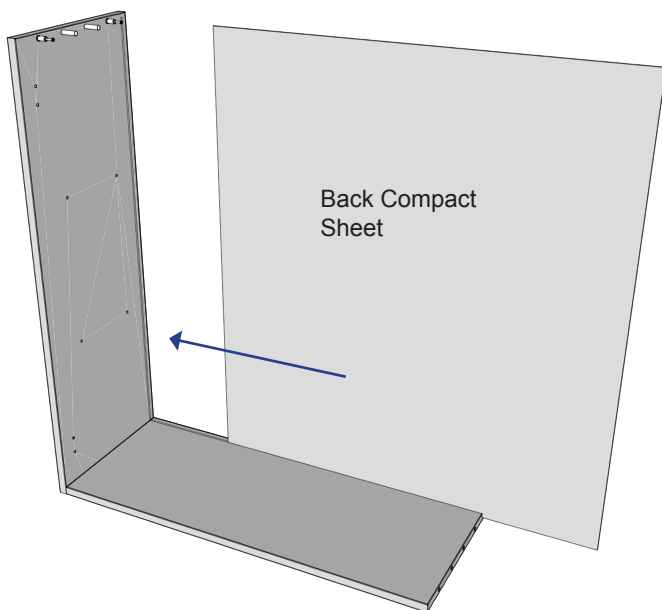


Begin with a side of a unit to assemble.
Screw the Cam screws and wooden dowels.

2

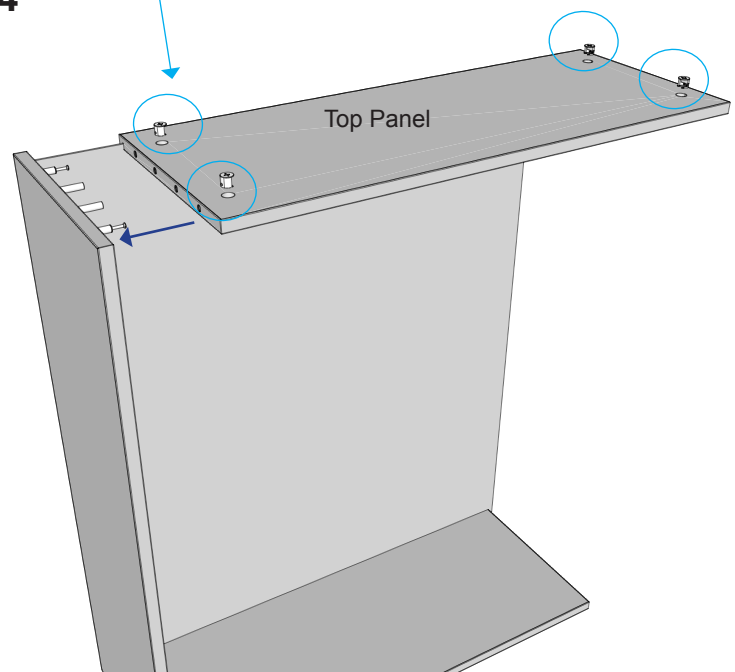


3



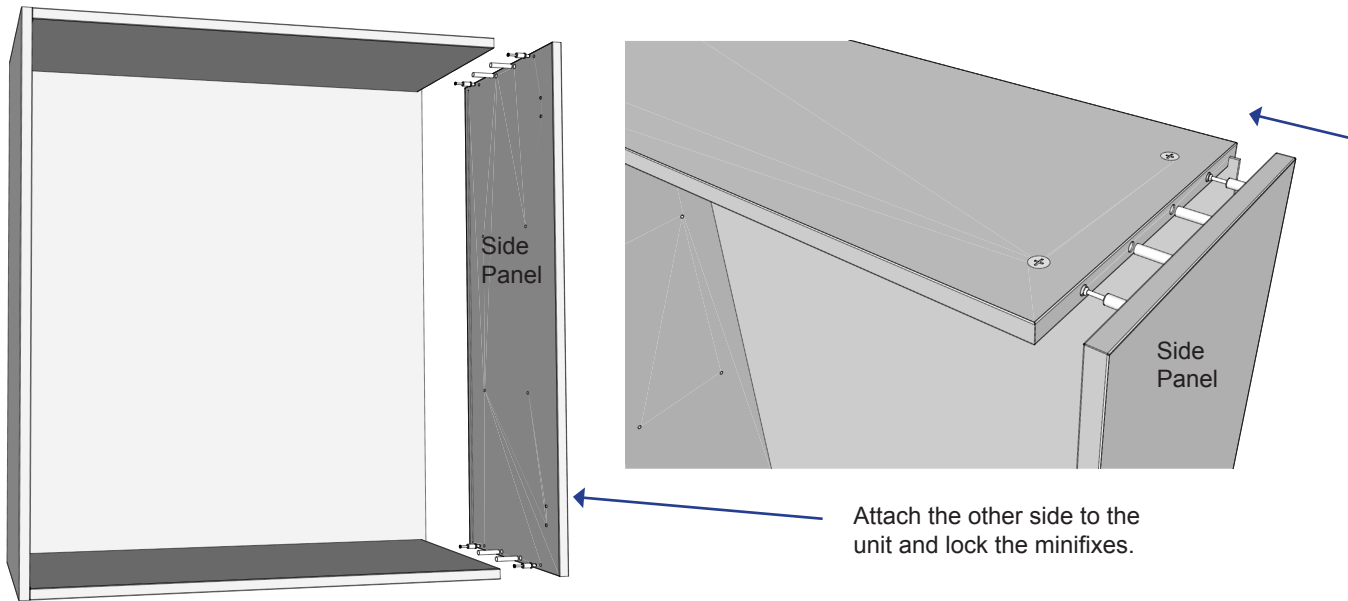
Insert the back compact sheet into the groove.

4

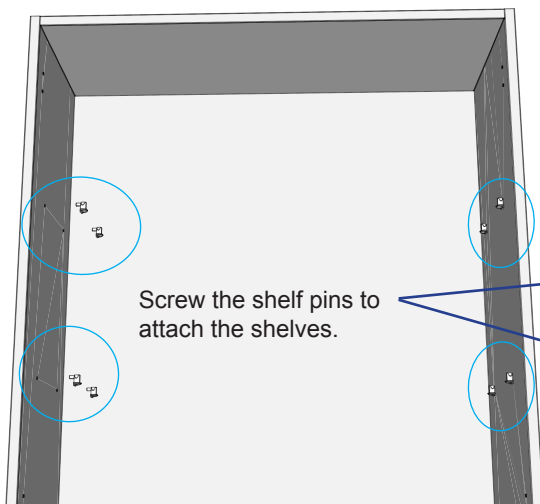


Attach and fix the top panel and the middle plank to the side.

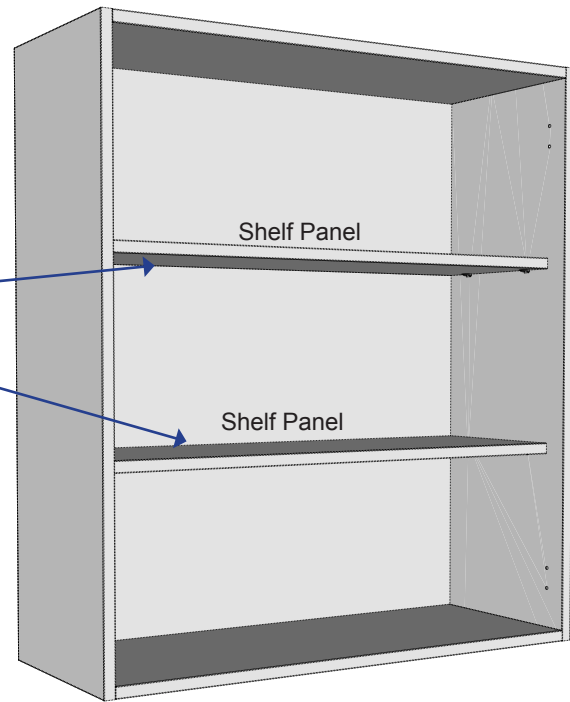
5



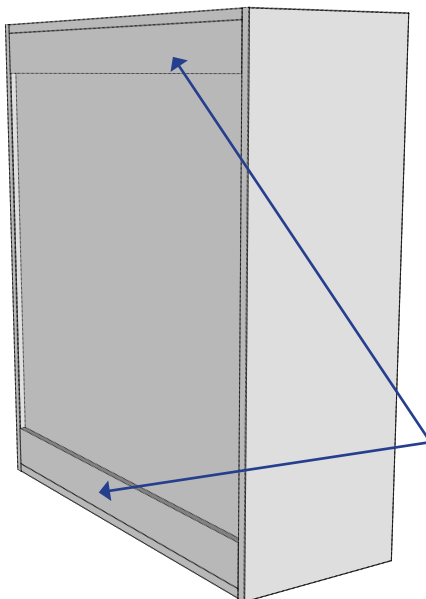
6



7

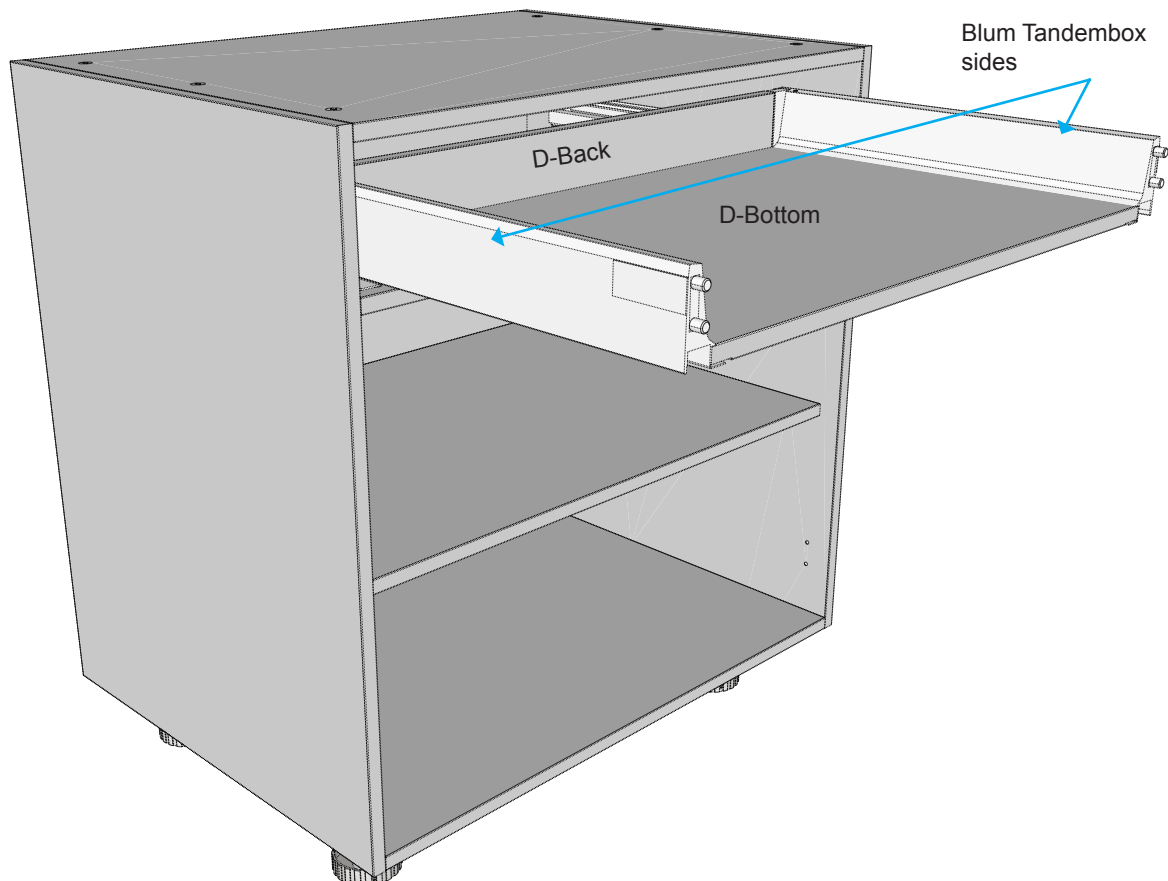
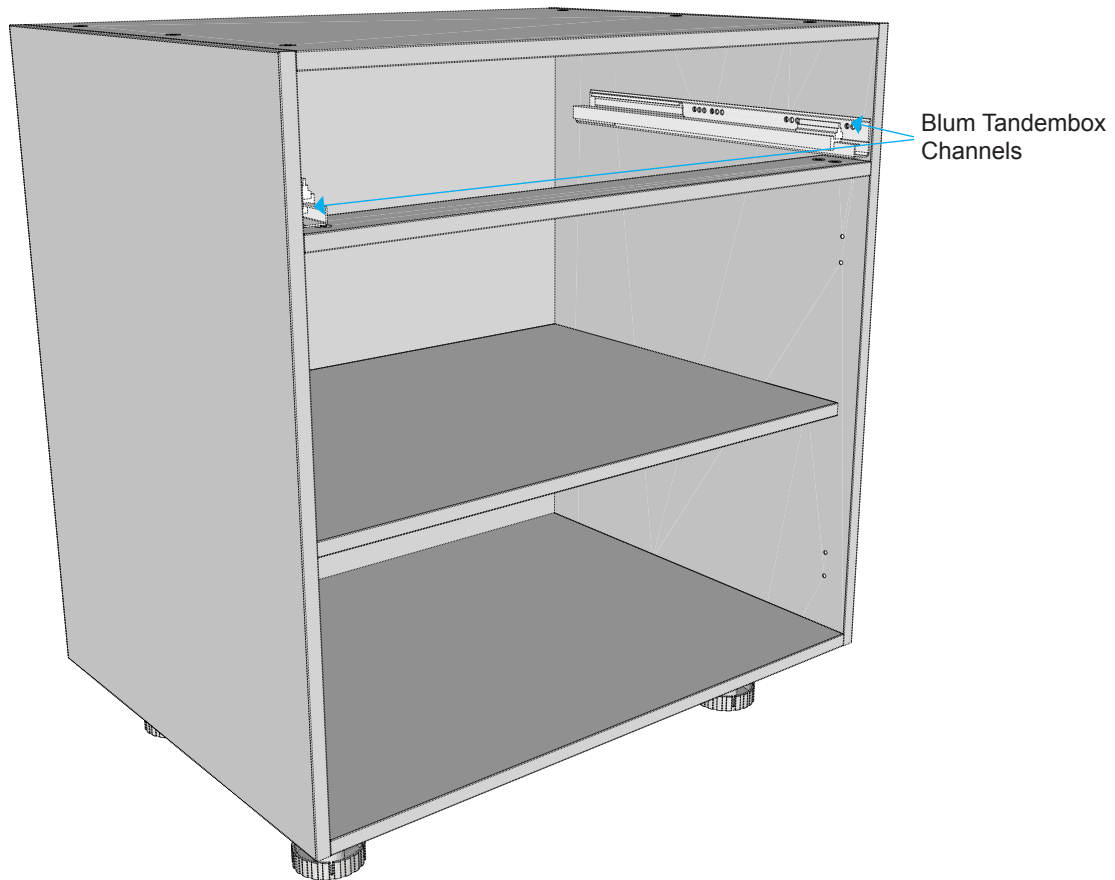


Overhead Unit Carcass ready to install



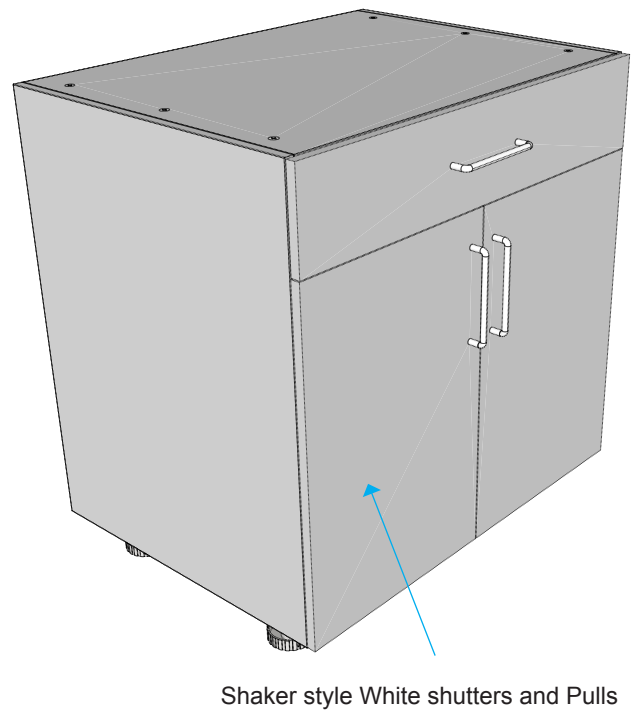
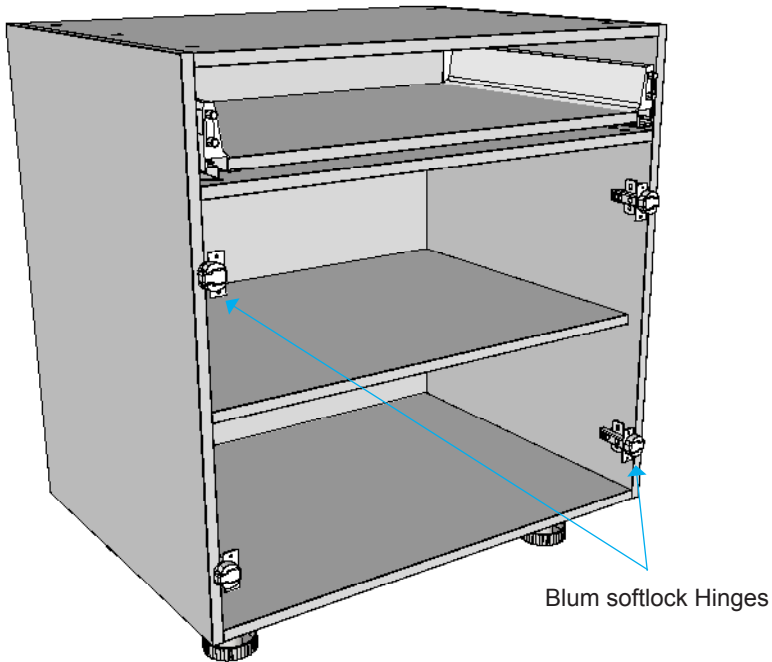
Nailer planks provided to secure the cabinet units with the wall.

Basic Drawer Assembly



Shutter Doors and Hinges

Base Cabinets



Overhead Cabinets

